

Account No. C130c1
 Jacobsen's Ligand

Current Data Parameters
 NAME Feb14-2013
 EXPNO 60
 PROCNO 1

F2 - Acquisition Parameters

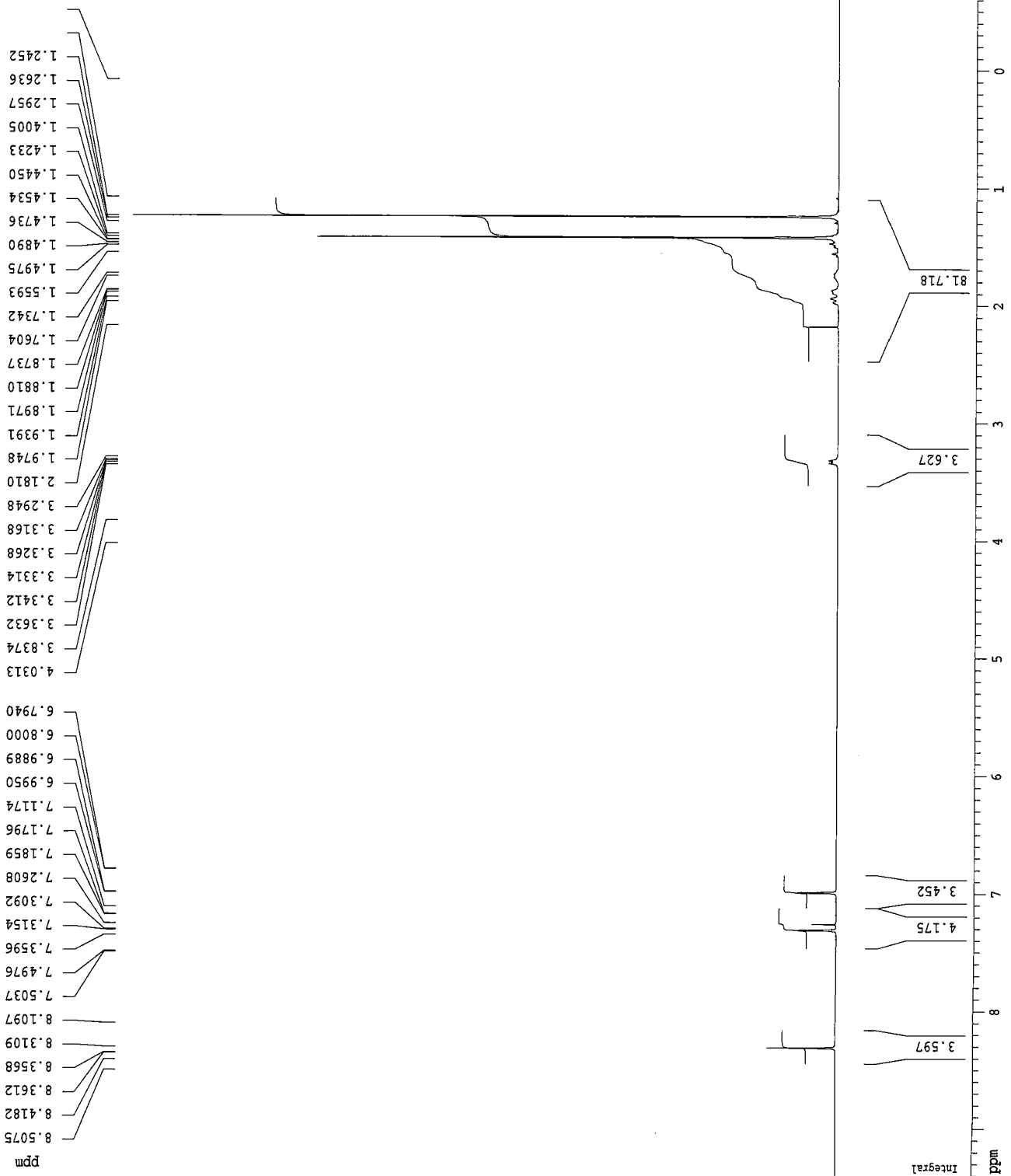
Date_ 20130214
 Time 17.58
 INSTRUM arx400
 PROBHD 5 mm QNP 1H
 PULPROG zg30
 TD 65536
 SOLVENT CDC13
 NS 32
 DS 0
 SWH 8064.516 Hz
 FIDRES 0.123055 Hz
 AQ 4.0632820 sec
 RG 360
 DW 62.000 usec
 DE 88.57 usec
 TE 300.0 K
 D1 2.00000000 sec
 F1 8.80 usec
 SFO1 400.1324008 MHz
 NUCLEUS 1H

F2 - Processing parameters

SI 65536
 SF 400.1300173 MHz
 WDW EM
 SSB 0
 LB 0.30 Hz
 GB 0
 PC 1.00

1D NMR plot parameters

CX 20.00 cm
 F1P 9.400 ppm
 F1 3761.22 Hz
 F2P -0.600 ppm
 F2 -240.08 Hz
 PPMCM 0.50000 ppm/cm
 HZCM 200.06500 Hz/cm



1.2452
 1.2636
 1.2957
 1.4005
 1.4233
 1.4450
 1.4534
 1.4736
 1.4890
 1.4975
 1.5593
 1.7342
 1.7604
 1.8737
 1.8810
 1.8971
 1.9391
 1.9748
 2.1810
 3.2948
 3.3168
 3.3268
 3.3314
 3.3412
 3.3632
 3.8374
 4.0313
 6.7940
 6.8000
 6.9889
 6.9950
 7.1174
 7.1796
 7.1859
 7.2608
 7.3092
 7.3154
 7.3596
 7.4976
 7.5037
 8.1097
 8.3109
 8.3568
 8.3612
 8.4182
 8.5075

Account No. C130c1
 Jacobsen's Ligand

Current Data Parameters
 NAME Feb14-2013
 EXPNO 60
 PROCNO 1

F2 - Acquisition Parameters
 Date_ 20130214
 Time 17.58
 INSTRUM arx400
 PROBHD 5 mm QNP 1H
 PULPROG zg30
 TD 65536
 SOLVENT CDCl3
 NS 32
 DS 0
 SWH 8064.516 Hz
 FIDRES 0.123055 Hz
 AQ 4.0632820 sec
 RG 360
 DW 62.000 usec
 DE 88.57 usec
 TE 300.0 K
 D1 2.00000000 sec
 P1 8.80 usec
 SF01 400.1324008 MHz
 NUCLEUS 1H

F2 - Processing parameters
 SI 65536
 SF 400.1300173 MHz
 WDW EM
 SSB 0
 LB 0.30 Hz
 GB 0
 PC 1.00

1D NMR plot parameters
 CX 20.00 cm
 F1P 16.000 ppm
 F1 6402.08 Hz
 F2P 9.400 ppm
 F2 3761.22 Hz
 PPMCM 0.33000 ppm/cm
 HZCM 132.04291 Hz/cm

9.8830

11.6558

13.4462
 13.4857
 13.5547
 13.7169
 13.8381

15.9050
 15.9586

Integral

.4312

