

Supporting Information

for

**Molecular Recognition Thermodynamics and Structural Elucidation of
Interactions between Steroids and Bridged Bis(β -Cyclodextrin)s**

Yu Liu,* Ying-Wei Yang, En-Cui Yang, Xu-Dong Guan

Department of Chemistry, State Key Laboratory of Elemento-Organic Chemistry,

Nankai University, Tianjin 300071, P. R. China

*Corresponding author: Tel: +86-022-23503625; fax: +86-022-23503625; E-mail:
yuliu@public.tpt.tj.cn

Figure S1	ROESY spectra of CA with a mixing time of 200 ms at 298K.	Page S2
Figure S2	ROESY spectra of DCA with a mixing time of 200 ms at 298K.	Page S3
Figure S3	ROESY spectrum of 5 -CA with a mixing time of 300 ms at 298K.	Page S4
Figure S4	ROESY spectrum of 5 -DCA with a mixing time of 300 ms at 298K.	Page S5
Figure S5	ROESY spectrum of 2 -CA with a mixing time of 200 ms at 298K.	Page S6
Figure S6	ROESY spectrum of 2 -DCA with a mixing time of 200 ms at 298K.	Page S7
Figure S7	ROESY spectrum of 2 -GCA with a mixing time of 200 ms at 298K.	Page S8
Figure S8	ROESY spectrum of 5 -CA with a mixing time of 200 ms at 298K.	Page S9
Figure S9	ROESY spectrum of 5 -DCA with a mixing time of 200 ms at 298K.	Page S10
Figure S10	ROESY spectrum of 7 -CA with a mixing time of 200 ms at 298K.	Page S11
Figure S11	ROESY spectrum of 7 -DCA with a mixing time of 200 ms at 298K.	Page S12



ROESY

Current Data Parameters
NAME CA-YYW
EXPNO 3
PROCNO 1

F2 - Acquisition Parameters
Date_ 20040716
Time 14.31
INSTRUM av600
PROBHD 5 mm BBO BB-1H
PULPROG roesypph19
TD 2048
SOLVENT D2O
NS 8
DS 4
SWH 6127.451 Hz
FIDRES 2.991920 Hz
AQ 0.1672484 sec
RG 1024
DW 81.600 usec
DE 6.00 usec
TE 293.2 K
d0 0.0000702 sec
D1 2.0000000 sec
d12 0.0002000 sec
D16 0.0002000 sec
D19 0.0001200 sec
IN0 0.00016320 sec
MCREST 0.0000000 sec
MCWRK 1.0000000 sec
STCNT 128

===== CHANNEL f1 =====
NUC1 1H
P0 11.60 usec
P1 11.60 usec
P15 300000.00 usec
P27 11.60 usec
PL1 -6.00 dB
PL11 13.80 dB
PL18 -6.00 dB
SF01 600.2328205 MHz

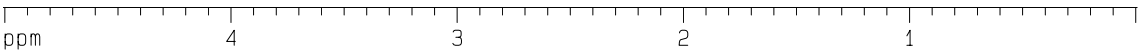
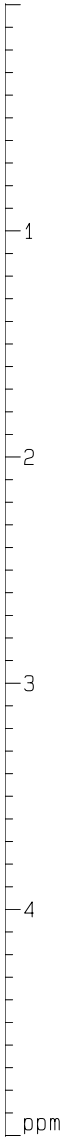
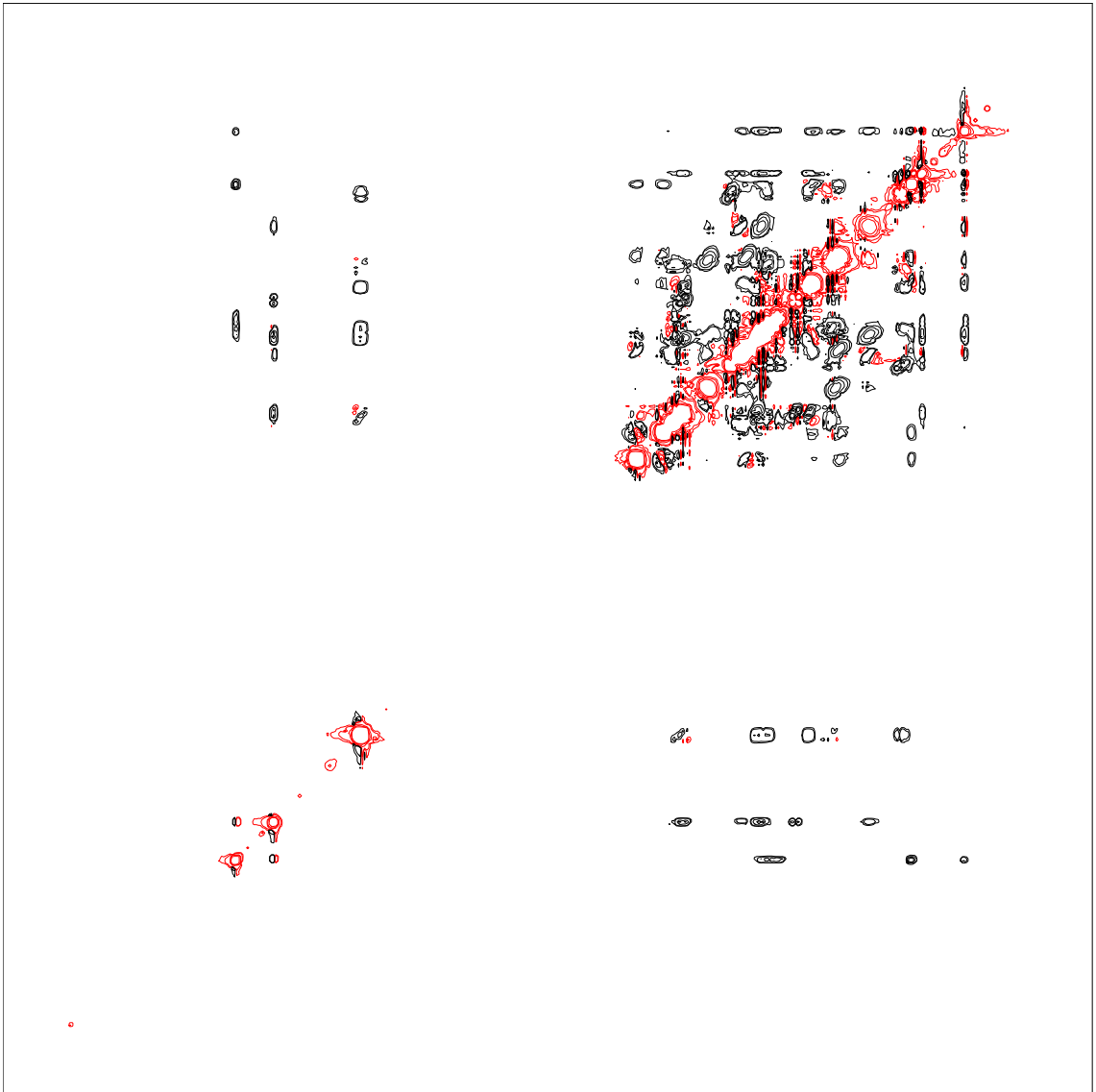
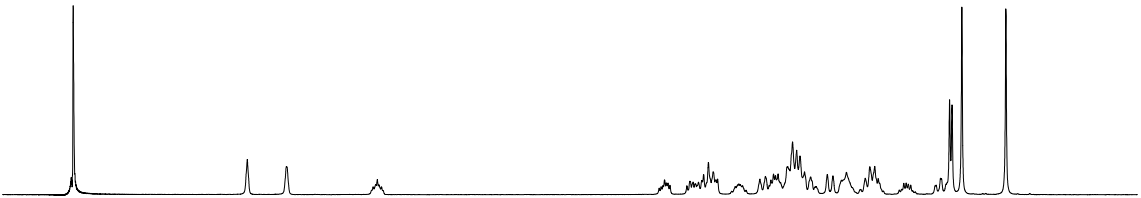
===== GRADIENT CHANNEL =====
GPMAX sine.100
GPMAX2 sine.100
GPX1 0.00 %
GPX2 0.00 %
GPY1 0.00 %
GPY2 0.00 %
GPZ1 30.00 %
GPZ2 30.00 %
P16 1000.00 usec

F1 - Acquisition parameters
ND0 1
TD 256
SF01 600.2328 MHz
FIDRES 23.935356 Hz
SW 10.208 ppm
FwMODE States-TFPI

F2 - Processing parameters
SI 1024
SF 600.2300000 MHz
WDW QSINE
SSB 2
LB 0.00 Hz
GB 0
PC 1.00

F1 - Processing parameters
SI 1024
MC2 States-TFPI
SF 600.2300000 MHz
WDW QSINE
SSB 2
LB 0.00 Hz
GB 0

2D NMR plot parameters
CX2 15.00 cm
CX1 15.00 cm
F2PLO 5.008 ppm
F2LO 3005.98 Hz
F2PHI -0.006 ppm
F2HI -3.89 Hz
F1PLO 5.009 ppm
F1LO 3006.58 Hz
F1PHI -0.005 ppm
F1HI -3.29 Hz
F2PMCM 0.33430 ppm/cm
F2HZCM 200.65805 Hz/cm
F1PMCM 0.33430 ppm/cm
F1HZCM 200.65805 Hz/cm





ROESYPH

Current Data Parameters
 NAME DCA-YYW
 EXPNO 3
 PROCNO 1

F2 - Acquisition Parameters
 Date_ 20040716
 Time 16.38
 INSTRUM av600
 PROBHD 5 mm BBO BB-1H
 PULPROG roesypph19
 TD 2048
 SOLVENT D2O
 NS 8
 DS 4
 SWH 6127.451 Hz
 FIDRES 2.991920 Hz
 AQ 0.1672484 sec
 RG 1024
 DW 81.600 usec
 DE 6.00 usec
 TE 293.2 K
 d0 0.0000702 sec
 D1 2.0000000 sec
 d12 0.0002000 sec
 D16 0.0002000 sec
 D19 0.0001200 sec
 INO 0.00016320 sec
 MCREST 0.0000000 sec
 MCMRK 1.0000000 sec
 ST1CNT 128

===== CHANNEL f1 =====
 NUC1 1H
 P0 11.60 usec
 P1 11.60 usec
 P15 300000.00 usec
 P27 11.60 usec
 PL1 -6.00 dB
 PL11 13.80 dB
 PL18 -6.00 dB
 SF01 600.2328198 MHz

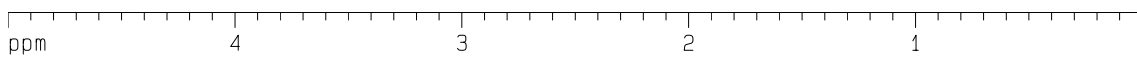
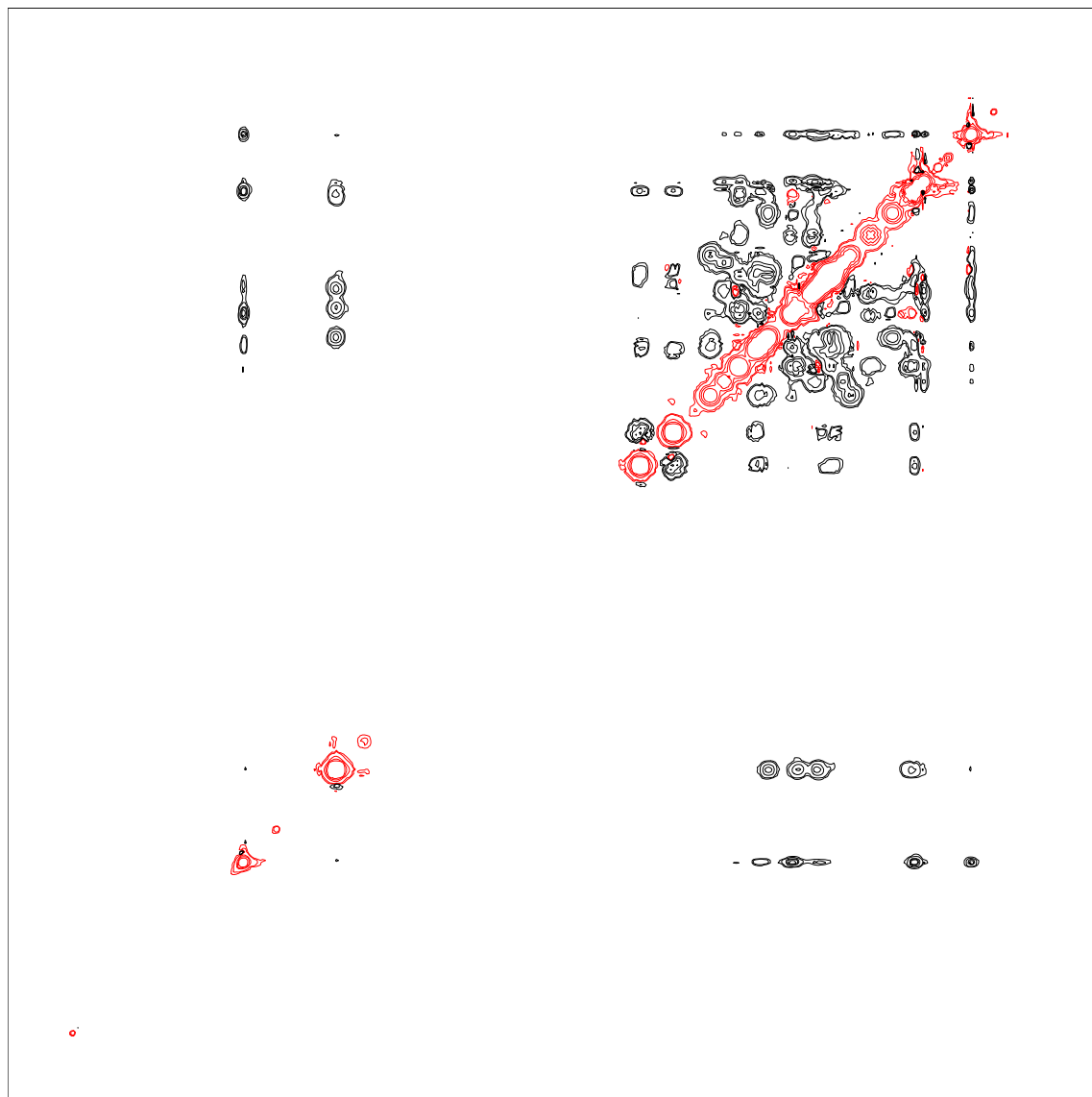
===== GRADIENT CHANNEL =====
 GPMAX sine:100
 GPMAX2 sine:100
 GPX1 0.00 %
 GPX2 0.00 %
 GPY1 0.00 %
 GPY2 0.00 %
 GPZ1 30.00 %
 GPZ2 30.00 %
 P16 1000.00 usec

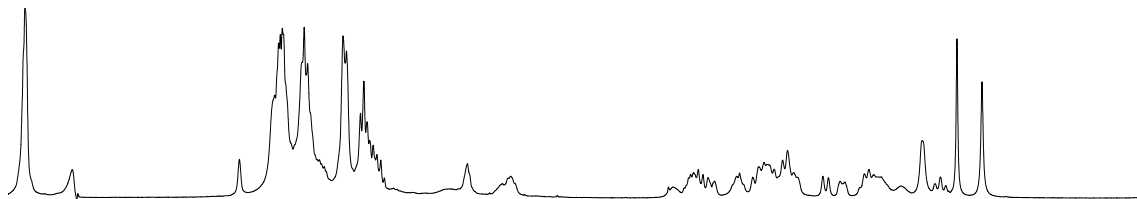
F1 - Acquisition parameters
 ND0 1
 TD 256
 SF01 600.2328 MHz
 FIDRES 23.935356 Hz
 SW 10.208 ppm
 FMODE States-TPPI

F2 - Processing parameters
 SI 1024
 SF 600.2300000 MHz
 WDW QSINE
 SSB 2
 LB 0.00 Hz
 GB 0
 PC 1.00

F1 - Processing parameters
 SI 1024
 MC2 States-TPPI
 SF 600.2300000 MHz
 WDW QSINE
 SSB 2
 LB 0.00 Hz
 GB 0

2D NMR plot parameters
 CX2 15.00 cm
 CX1 15.00 cm
 F2PLO 5.000 ppm
 F2LO 3001.15 Hz
 F2PHI 0.000 ppm
 F2HI 0.00 Hz
 F1PLO 5.000 ppm
 F1LO 3001.15 Hz
 F1PHI 0.000 ppm
 F1HI 0.00 Hz
 F2PPMCM 0.33333 ppm/cm
 F2HZCM 200.07666 Hz/cm
 F1PPMCM 0.33333 ppm/cm
 F1HZCM 200.07666 Hz/cm





ROESYPH

Current Data Parameters
 NAME SSENCD-CA-YM040717
 EXPNO 3
 PROCNO 1

F2 - Acquisition Parameters
 Date_ 20040717
 Time 9.53
 INSTRUM av600
 PROBHD 5 mm BBO BB-1H
 PULPROG roesypph19
 TD 2048
 SOLVENT D2O
 NS 8
 DS 4
 SWH 6127.451 Hz
 FIDRES 2.991920 Hz
 AQ 0.1672484 sec
 RG 1024
 DW 81.600 usec
 DE 6.00 usec
 TE 293.2 K
 d0 0.0007022 sec
 D1 2.0000000 sec
 d12 0.0002000 sec
 D16 0.0002000 sec
 D19 0.00012000 sec
 INO 0.00016320 sec
 MCREST 0.0000000 sec
 MCMRK 1.0000000 sec
 ST1CNT 128

***** CHANNEL f1 *****
 NUC1 1H
 PD 11.60 usec
 P1 11.60 usec
 P15 300000.00 usec
 P27 11.60 usec
 PL1 -6.00 dB
 PL11 13.80 dB
 PL16 -6.00 dB
 SF01 600.2328191 MHz

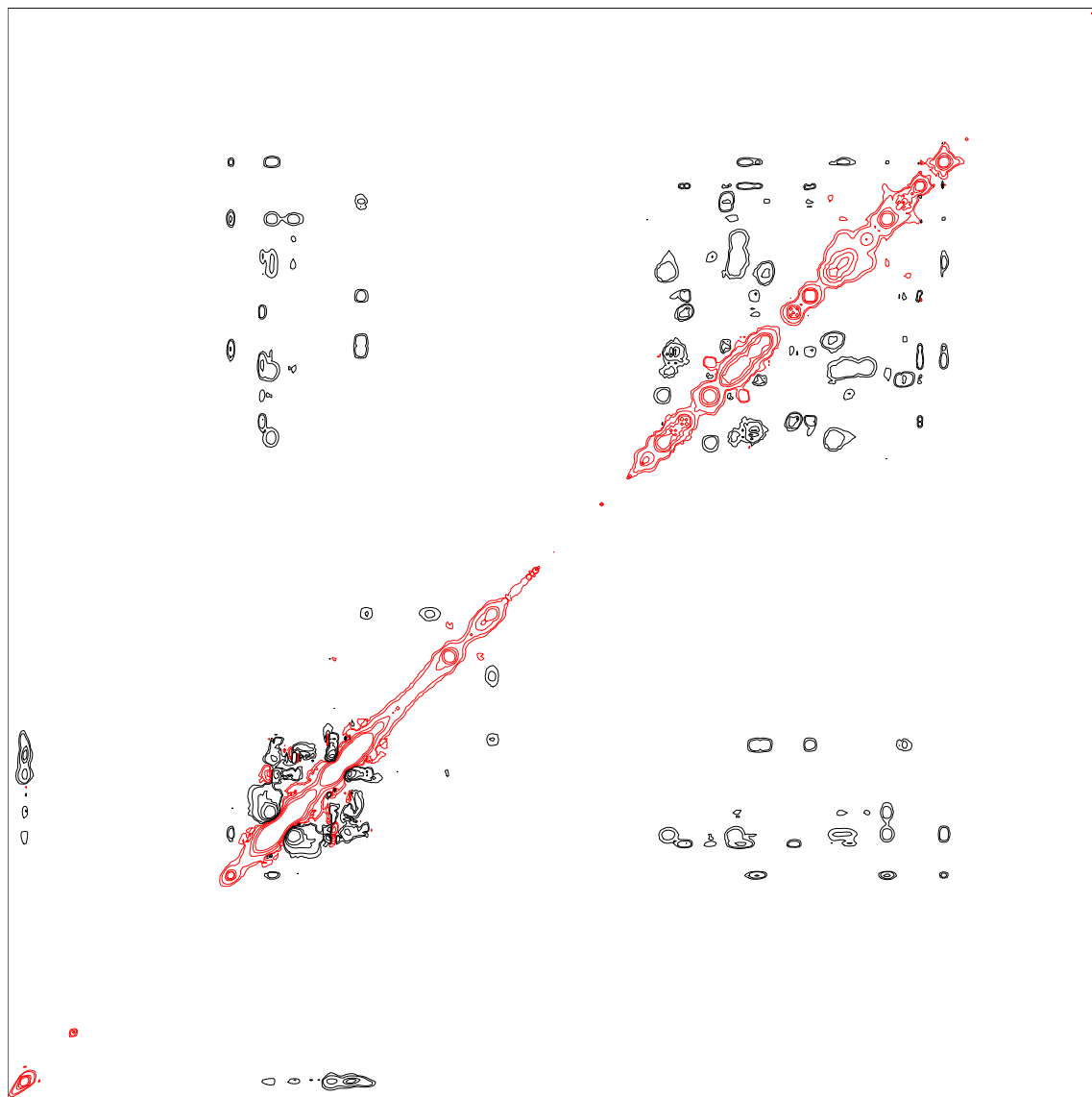
***** GRADIENT CHANNEL *****
 GPMAM1 sine.100
 GPMAM2 sine.100
 GPX1 0.00 %
 GPX2 0.00 %
 GPY1 0.00 %
 GPY2 0.00 %
 GPZ1 30.00 %
 GPZ2 30.00 %
 P16 1000.00 usec

F1 - Acquisition parameters
 ND0 1
 TD 256
 SF01 600.2328 MHz
 FIDRES 23.935356 Hz
 SW 10.208 ppm
 FMODE States-TPPI

F2 - Processing parameters
 SI 1024
 SF 600.2300000 MHz
 WDW QSINE
 SSB 2
 LB 0.00 Hz
 GB 0
 PC 1.00

F1 - Processing parameters
 SI 1024
 MC2 States-TPPI
 SF 600.2300000 MHz
 WDW QSINE
 SSB 2
 LB 0.00 Hz
 GB 0

2D NMR plot parameters
 CX2 15.00 cm
 CX1 15.00 cm
 F2PLO 5.000 ppm
 F2LO 3001.15 Hz
 F2PHI 0.000 ppm
 F2HI 0.00 Hz
 F1PLO 5.000 ppm
 F1LO 3001.15 Hz
 F1PHI 0.000 ppm
 F1HI 0.00 Hz
 F2PPMCM 0.33333 ppm/cm
 F2HZCM 200.07666 Hz/cm
 F1PPMCM 0.33333 ppm/cm
 F1HZCM 200.07666 Hz/cm



ppm 4 3 2 1

1 2 3 4 ppm



ROESYPH

Current Data Parameters
 NAME SSENCD-DCA-YYW040717
 EXPNO 3
 PROCNO 1

F2 - Acquisition Parameters
 Date_ 20040717
 Time 11:55
 INSTRUM av600
 PROBHD 5 mm BBO BB-1H
 PULPROG roesypph19
 TD 2048
 SOLVENT D2O
 NS 8
 DS 4
 SWH 6127.451 Hz
 FIDRES 2.991920 Hz
 AQ 0.1672484 sec
 RG 1024
 DW 81.600 usec
 DE 6.00 usec
 TE 293.2 K
 d0 0.0007022 sec
 D1 2.0000000 sec
 d12 0.0002000 sec
 D16 0.0002000 sec
 D19 0.00012000 sec
 INO 0.00016320 sec
 MCREST 0.0000000 sec
 MCMRK 1.0000000 sec
 STCNT 128

===== CHANNEL f1 =====
 NUC1 1H
 P0 11.60 usec
 P1 11.60 usec
 P15 30000.00 usec
 P27 11.60 usec
 PL1 -6.00 dB
 PL11 13.80 dB
 PL16 -6.00 dB
 SF01 600.2328187 MHz

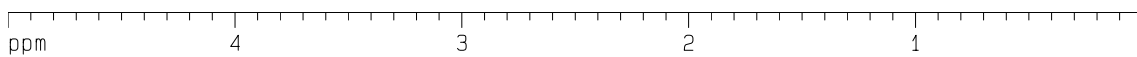
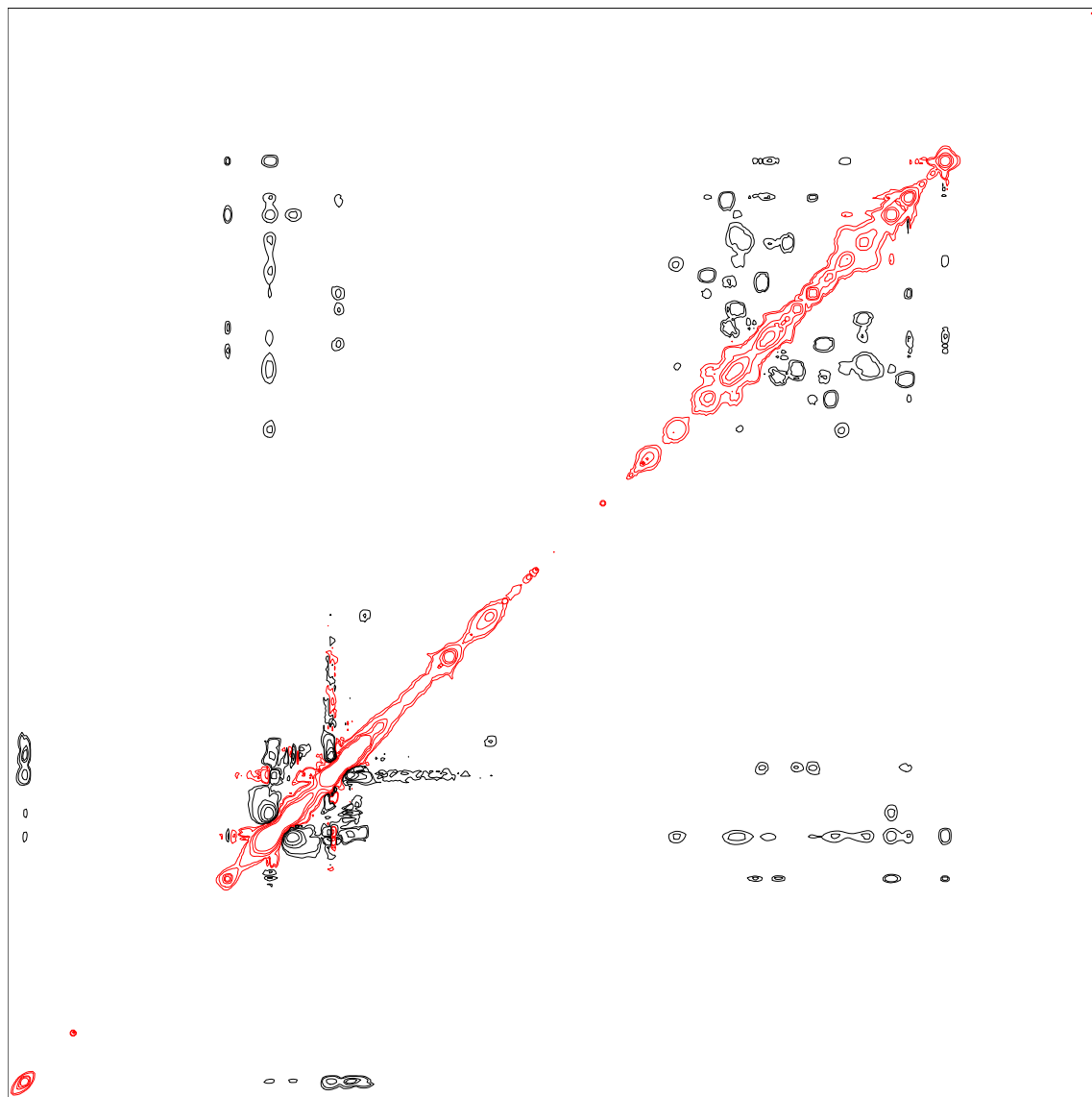
===== GRADIENT CHANNEL =====
 GPMAM1 sine.100
 GPMAM2 sine.100
 GPX1 0.00 %
 GPX2 0.00 %
 GPY1 0.00 %
 GPY2 0.00 %
 GPZ1 30.00 %
 GPZ2 30.00 %
 P16 1000.00 usec

F1 - Acquisition parameters
 ND0 1
 TD 256
 SF01 600.2328 MHz
 FIDRES 23.935356 Hz
 SW 10.208 ppm
 FMODE States-TPPI

F2 - Processing parameters
 SI 1024
 SF 600.2300000 MHz
 WDW QSINE
 SSB 2
 LB 0.00 Hz
 GB 0
 PC 1.00

F1 - Processing parameters
 SI 1024
 MC2 States-TPPI
 SF 600.2300000 MHz
 WDW QSINE
 SSB 2
 LB 0.00 Hz
 GB 0

2D NMR plot parameters
 CX2 15.00 cm
 CX1 15.00 cm
 F2PLO 5.000 ppm
 F2LO 3001.15 Hz
 F2PHI 0.000 ppm
 F2HI 0.00 Hz
 F1PLO 5.000 ppm
 F1LO 3001.15 Hz
 F1PHI 0.000 ppm
 F1HI 0.00 Hz
 F2PPMCM 0.33333 ppm/cm
 F2HZCM 200.07666 Hz/cm
 F1PPMCM 0.33333 ppm/cm
 F1HZCM 200.07666 Hz/cm



ppm

ppm

RLNABC-EN-CA

Current Data Parameters
NAME RLNABC-EN-CD-YW
EXPNO 3
PROCNO 1

F2 - Acquisition Parameters
Date_ 20031114
Time 11.20
INSTRUM av600
PROBHD 5 mm TBI 1H-BB
PULPROG roesyphpr
TD 2048
SOLVENT D2O
NS 8
DS 16
SWH 6127.451 Hz
FIDRES 2.991920 Hz
AQ 0.1672484 sec
RG 512
DW 81.600 usec
DE 6.00 usec
TE 292.6 K
d0 0.00007302 sec
D1 1.50000000 sec
d11 0.03000000 sec
d12 0.00002000 sec
d13 0.00000400 sec
IN0 0.00016320 sec
MCREST 0.00000000 sec
MCWRK 0.00999999 sec
ST1CNT 128

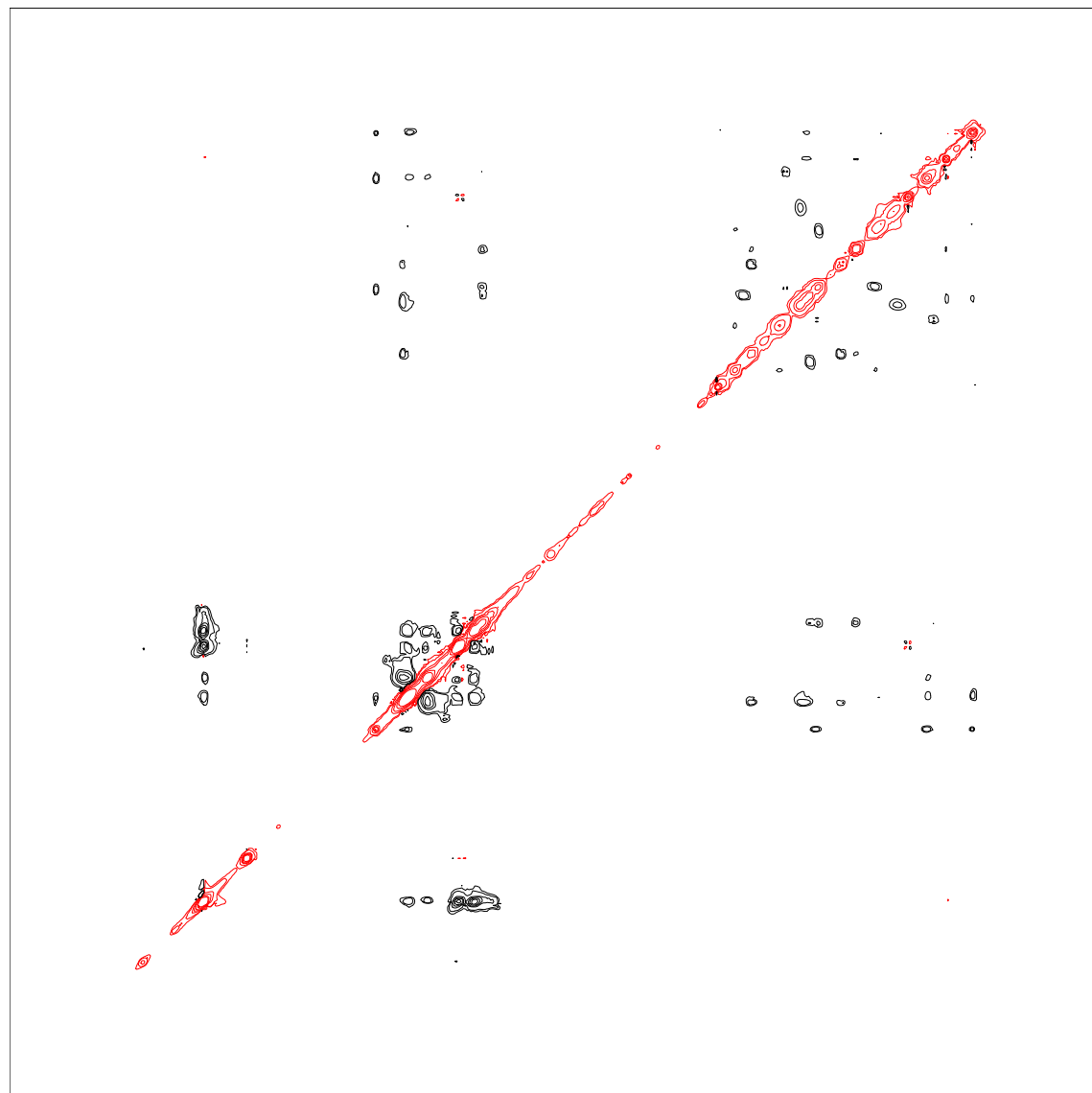
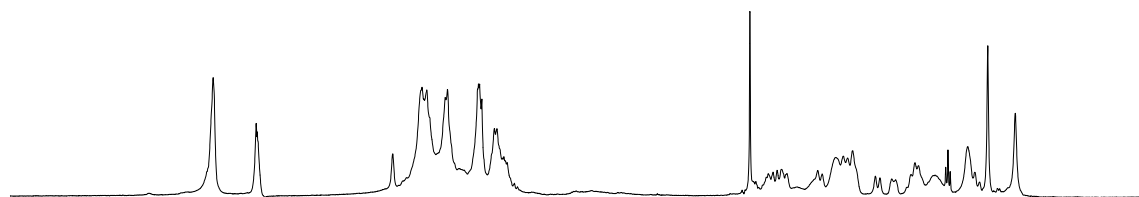
***** CHANNEL f1 *****
NUC1 1H
P1 7.20 usec
P15 400000.00 usec
PL1 -6.00 dB
PL9 70.00 dB
PL11 17.68 dB
SF01 600.1328159 MHz

F1 - Acquisition parameters
ND0 1
TD 256
SF01 600.1328 MHz
FIDRES 23.935356 Hz
SW 10.210 ppm
FnMODE States-TPPI

F2 - Processing parameters
SI 1024
SF 600.1300000 MHz
WDW QSINE
SSB 2
LB 0.00 Hz
GB 0
PC 1.00

F1 - Processing parameters
SI 1024
MC2 States-TPPI
SF 600.1300000 MHz
WDW QSINE
SSB 2
LB 0.00 Hz
GB 0

2D NMR plot parameters
CX2 15.00 cm
CX1 15.00 cm
F2PLO 6.000 ppm
F2LO 3600.78 Hz
F2PHI 0.000 ppm
F2HI 0.00 Hz
F1PLO 6.000 ppm
F1LO 3600.78 Hz
F1PHI 0.000 ppm
F1HI 0.00 Hz
F2PPMCM 0.40000 ppm/cm
F2HZCM 240.05200 Hz/cm
F1PPMCM 0.40000 ppm/cm
F1HZCM 240.05200 Hz/cm



ppm

5

4

3

2

1

ppm

1

2

3

4

5

RLNABCD-DCA

Current Data Parameters
 NAME RLNABCD-DCA-YYW
 EXPNO 3
 PROCNO 1

F2 - Acquisition Parameters
 Date_ 20031120
 Time 14.03
 INSTRUM av600
 PROBHD 5 mm QXI 1H Z8
 PULPROG roesyphpr
 TD 2048
 SOLVENT D2O
 NS 8
 DS 16
 SWH 6127.451 Hz
 FIDRES 2.991920 Hz
 AQ 0.1672484 sec
 RG 512
 DW 81.600 usec
 DE 6.00 usec
 TE 293.2 K
 d0 0.00007254 sec
 D1 1.50000000 sec
 d11 0.03000000 sec
 d12 0.00002000 sec
 d13 0.00000400 sec
 INO 0.00016320 sec
 MCREST 0.00000000 sec
 MCWRR 0.00999999 sec
 ST1CNT 128

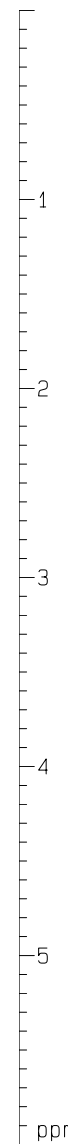
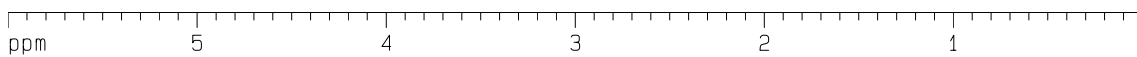
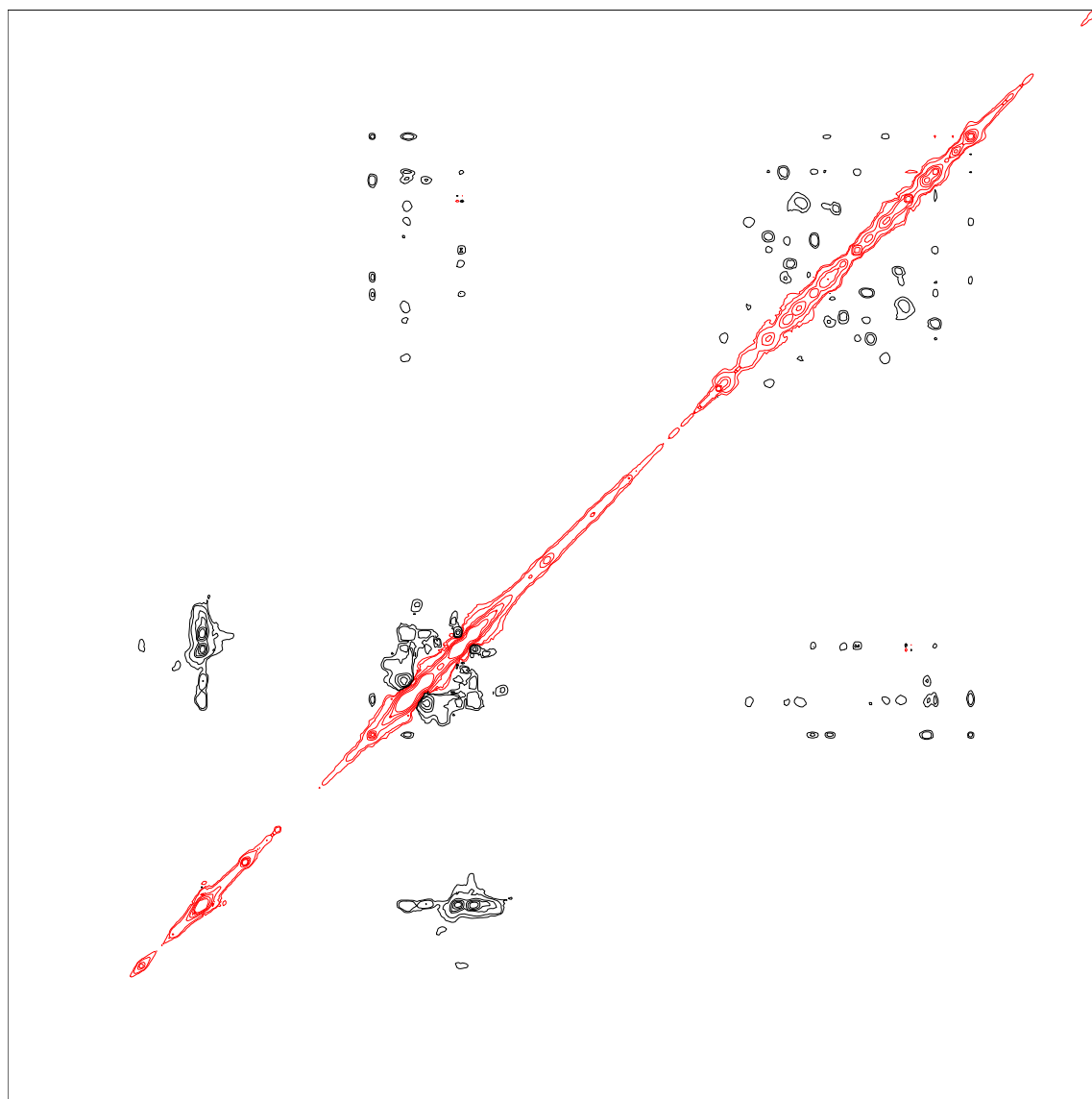
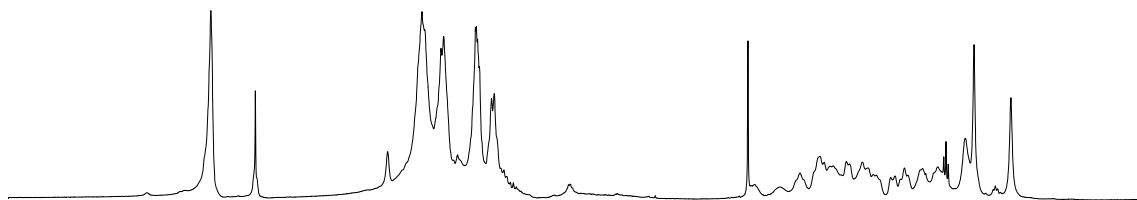
***** CHANNEL f1 *****
 NUC1 1H
 P1 7.95 usec
 P15 200000.00 usec
 PL1 -3.00 dB
 PL9 70.00 dB
 PL11 19.81 dB
 SF01 600.1328160 MHz

F1 - Acquisition parameters
 ND0 1
 TD 256
 SF01 600.1328 MHz
 FIDRES 23.935356 Hz
 SW 10.210 ppm
 FnmODE States-TPPI

F2 - Processing parameters
 SI 1024
 SF 600.1300000 MHz
 WDW QSINE
 SSB 2
 LB 0.00 Hz
 GB 0
 PC 1.00

F1 - Processing parameters
 SI 1024
 MC2 States-TPPI
 SF 600.1300000 MHz
 WDW QSINE
 SSB 2
 LB 0.00 Hz
 GB 0

2D NMR plot parameters
 CX2 15.00 cm
 CX1 15.00 cm
 F2PLO 6.000 ppm
 F2LO 3600.78 Hz
 F2PHI 0.000 ppm
 F2HI 0.00 Hz
 F1PLO 6.000 ppm
 F1LO 3600.78 Hz
 F1PHI 0.000 ppm
 F1HI 0.00 Hz
 F2PPMCM 0.40000 ppm/cm
 F2HZCM 240.05200 Hz/cm
 F1PPMCM 0.40000 ppm/cm
 F1HZCM 240.05200 Hz/cm



ppm

RLNABCD-GCA-YYW



Current Data Parameters
NAME RLNABCD-GCA-YYW
EXPNO 3
PROCNO 1

F2 - Acquisition Parameters
Date_ 20031120
Time 16.39
INSTRUM av600
PROBHD 5 mm QXI 1H Z8
PULPROG roesyphpr
TD 2048
SOLVENT Acetone
NS 8
DS 16
SWH 6127.451 Hz
FIDRES 2.991920 Hz
AQ 0.1672484 sec
RG 512
DW 81.600 usec
DE 6.00 usec
TE 293.2 K
d0 0.00007254 sec
D1 1.50000000 sec
d11 0.03000000 sec
d12 0.00002000 sec
d13 0.00000400 sec
IN0 0.00016320 sec
MCREST 0.00000000 sec
MCWRK 0.00999999 sec
ST1CNT 128

----- CHANNEL f1 -----
NUC1 1H
P1 7.95 usec
P15 200000.00 usec
PL1 -3.00 dB
PL9 70.00 dB
PL11 19.81 dB
SF01 600.1328163 MHz

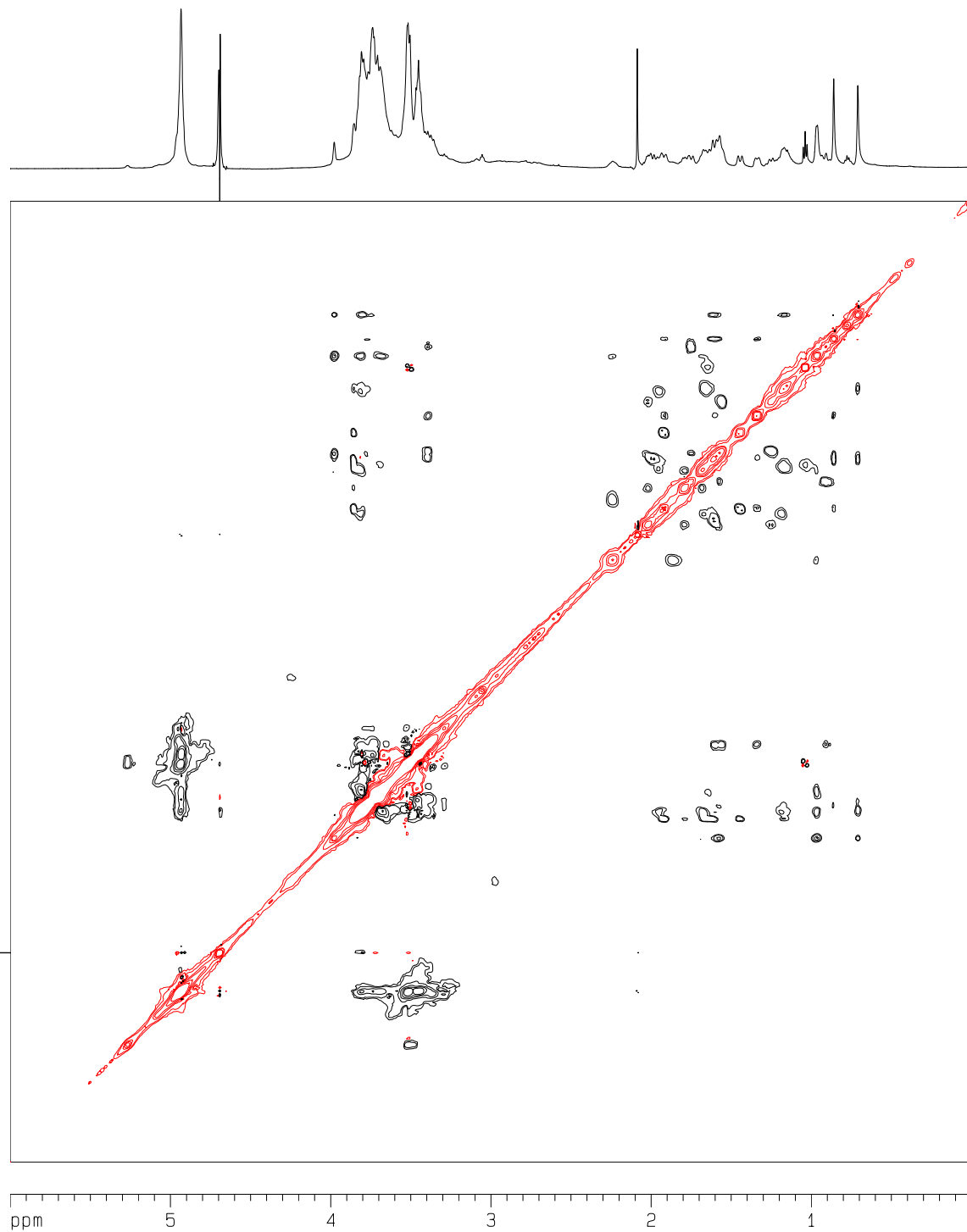
F1 - Acquisition parameters
ND0 1
TD 256
SF01 600.1328 MHz
FIDRES 23.935356 Hz
SW 10.210 ppm
FnMODE States-TPPI

F2 - Processing parameters
SI 1024
SF 600.1300000 MHz
WDW QSINE
SSB 2
LB 0.00 Hz
GB 0
PC 1.00

F1 - Processing parameters
SI 1024
MC2 States-TPPI
SF 600.1300000 MHz
WDW QSINE
SSB 2
LB 0.00 Hz
GB 0

2D NMR plot parameters

CX2 15.00 cm
CX1 15.00 cm
F2PLO 6.000 ppm
F2LO 3600.78 Hz
F2PHI 0.000 ppm
F2HI 0.00 Hz
F1PLO 6.000 ppm
F1LO 3600.78 Hz
F1PHI 0.000 ppm
F1HI 0.00 Hz
F2PPMCM 0.40000 ppm/cm
F2HZCM 240.05200 Hz/cm
F1PPMCM 0.40000 ppm/cm
F1HZCM 240.05200 Hz/cm



ppm 5 4 3 2 1

SSENBCD-CA-YYW

Current Data Parameters
 NAME SSENBCD-CD-YYW
 EXPNO 3
 PROCNO 1

F2 - Acquisition Parameters
 Date_ 20031114
 Time 12.43
 INSTRUM av600
 PROBHD 5 mm TBI 1H-BB
 PULPROG roesyphpr
 TD 2048
 SOLVENT D2O
 NS 8
 DS 16
 SWH 6127.451 Hz
 FIDRES 2.991920 Hz
 AQ 0.1672484 sec
 RG 256
 DW 81.600 usec
 DE 6.00 usec
 TE 293.1 K
 d0 0.00007302 sec
 D1 1.50000000 sec
 d11 0.03000000 sec
 d12 0.00002000 sec
 d13 0.00000400 sec
 INO 0.00016320 sec
 MCREST 0.00000000 sec
 MCWRR 0.00999999 sec
 ST1CNT 128

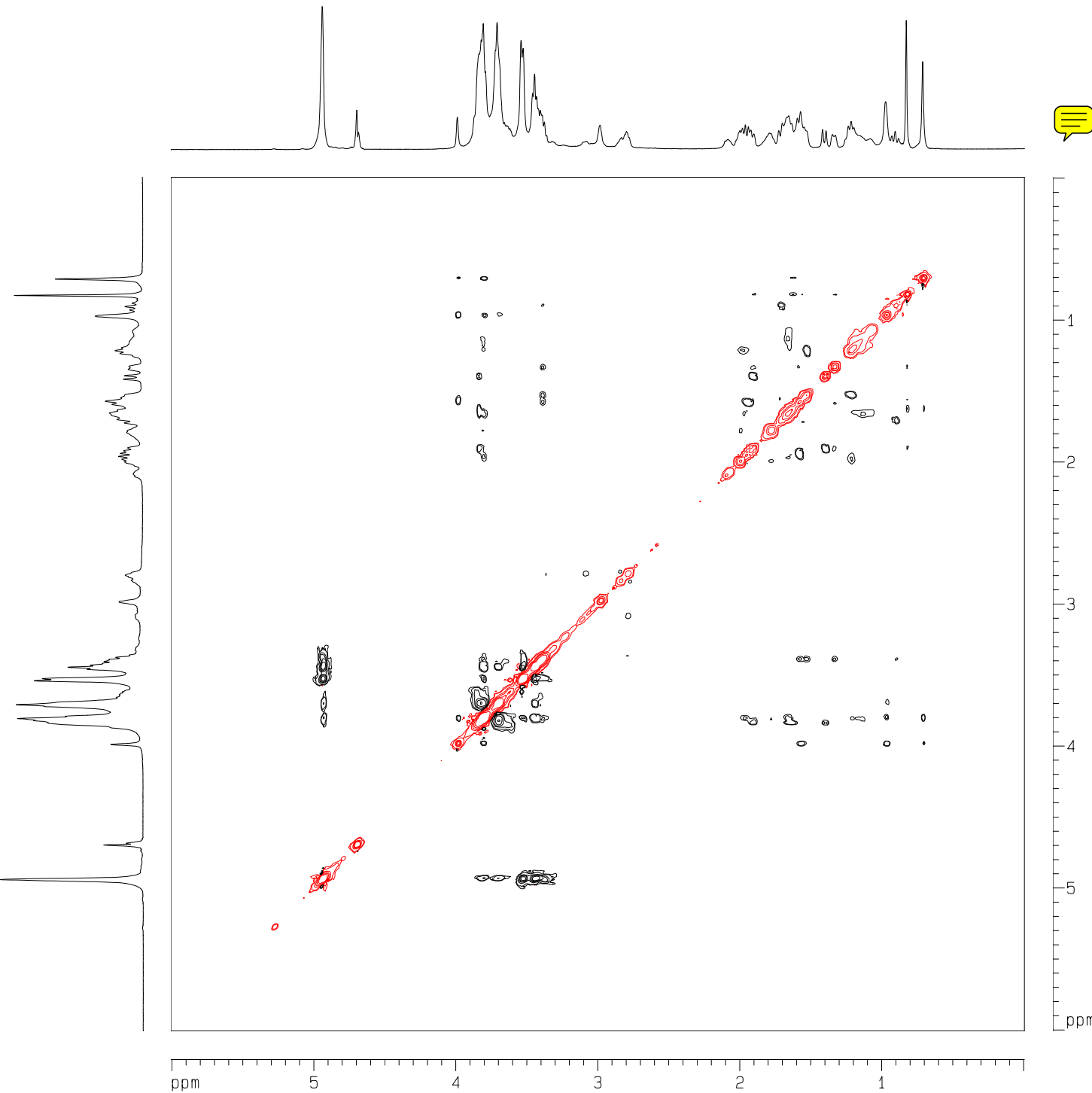
===== CHANNEL f1 =====
 NUC1 1H
 P1 7.20 usec
 P15 400000.00 usec
 PL1 -6.00 dB
 PL9 70.00 dB
 PL11 17.68 dB
 SF01 600.1328152 MHz

F1 - Acquisition parameters
 ND0 1
 TD 256
 SF01 600.1328 MHz
 FIDRES 23.935356 Hz
 SW 10.210 ppm
 FnmODE States-TPPI

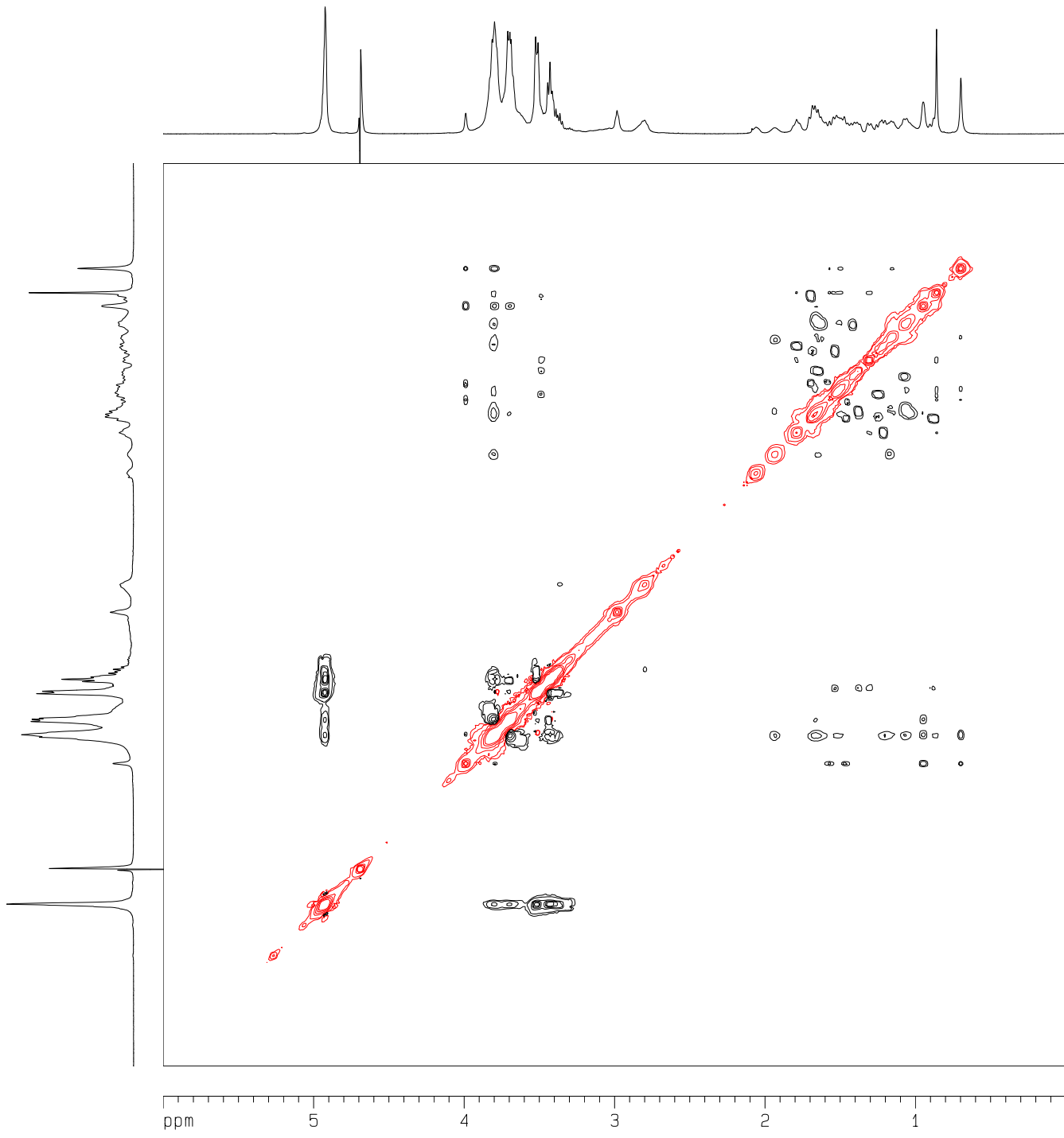
F2 - Processing parameters
 SI 1024
 SF 600.1300000 MHz
 WDW QSINE
 SSB 2
 LB 0.00 Hz
 GB 0
 PC 1.00

F1 - Processing parameters
 SI 1024
 MC2 States-TPPI
 SF 600.1300000 MHz
 WDW QSINE
 SSB 2
 LB 0.00 Hz
 GB 0

2D NMR plot parameters
 CX2 15.00 cm
 CX1 15.00 cm
 F2PLO 6.007 ppm
 F2LO 3605.07 Hz
 F2PHI -0.005 ppm
 F2HI -3.19 Hz
 F1PLO 6.007 ppm
 F1LO 3605.07 Hz
 F1PHI -0.005 ppm
 F1HI -3.19 Hz
 F2PPMCM 0.40083 ppm/cm
 F2HZCM 240.55032 Hz/cm
 F1PPMCM 0.40083 ppm/cm
 F1HZCM 240.55032 Hz/cm



SSENBOD-DCA



Current Data Parameters
 NAME SSENBOD-DCA-YYW
 EXPNO 3
 PROCNO 1

F2 - Acquisition Parameters
 Date_ 20031120
 Time 12.39
 INSTRUM av600
 PROBHD 5 mm QXI 1H Z8
 PULPROG roesyphpr
 TD 2048
 SOLVENT D2O
 NS 8
 DS 16
 SWH 6127.451 Hz
 FIDRES 2.991920 Hz
 AQ 0.1672484 sec
 RG 256
 DW 81.600 usec
 DE 6.00 usec
 TE 293.2 K
 d0 0.00007254 sec
 D1 1.50000000 sec
 d11 0.03000000 sec
 d12 0.00002000 sec
 d13 0.00000400 sec
 INO 0.00016320 sec
 MCREST 0.00000000 sec
 MCWRR 0.00999999 sec
 ST1CNT 128

***** CHANNEL f1 *****
 NUC1 1H
 P1 7.95 usec
 P15 200000.00 usec
 PL1 -3.00 dB
 PL9 80.00 dB
 PL11 19.81 dB
 SF01 600.1328163 MHz

F1 - Acquisition parameters
 ND0 1
 TD 256
 SF01 600.1328 MHz
 FIDRES 23.935356 Hz
 SW 10.210 ppm
 FnmODE States-TPPI

F2 - Processing parameters
 SI 1024
 SF 600.1300000 MHz
 WDW QSINE
 SSB 2
 LB 0.00 Hz
 GB 0
 PC 1.00

F1 - Processing parameters
 SI 1024
 MC2 States-TPPI
 SF 600.1300000 MHz
 WDW QSINE
 SSB 2
 LB 0.00 Hz
 GB 0

2D NMR plot parameters
 CX2 15.00 cm
 CX1 15.00 cm
 F2PLO 6.000 ppm
 F2LO 3600.78 Hz
 F2PHI 0.000 ppm
 F2HI 0.00 Hz
 F1PLO 6.000 ppm
 F1LO 3600.78 Hz
 F1PHI 0.000 ppm
 F1HI 0.00 Hz
 F2PPMCM 0.40000 ppm/cm
 F2HZCM 240.05200 Hz/cm
 F1PPMCM 0.40000 ppm/cm
 F1HZCM 240.05200 Hz/cm

P-SSENC-CA

Current Data Parameters
 NAME P-SSENC-CD-YYW
 EXPNO 3
 PROCNO 1

F2 - Acquisition Parameters
 Date_ 20031114
 Time 14.17
 INSTRUM av600
 PROBHD 5 mm TBI 1H-BB
 PULPROG roesyphpr
 TD 2048
 SOLVENT D2O
 NS 8
 DS 16
 SWH 6127.451 Hz
 FIDRES 2.991920 Hz
 AQ 0.1672484 sec
 RG 256
 DW 81.600 usec
 DE 6.00 usec
 TE 293.5 K
 d0 0.00007302 sec
 D1 1.50000000 sec
 d11 0.03000000 sec
 d12 0.00002000 sec
 d13 0.00000400 sec
 INO 0.00016320 sec
 MCREST 0.00000000 sec
 MCWRR 0.00999999 sec
 ST1CNT 128

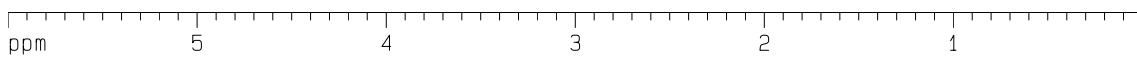
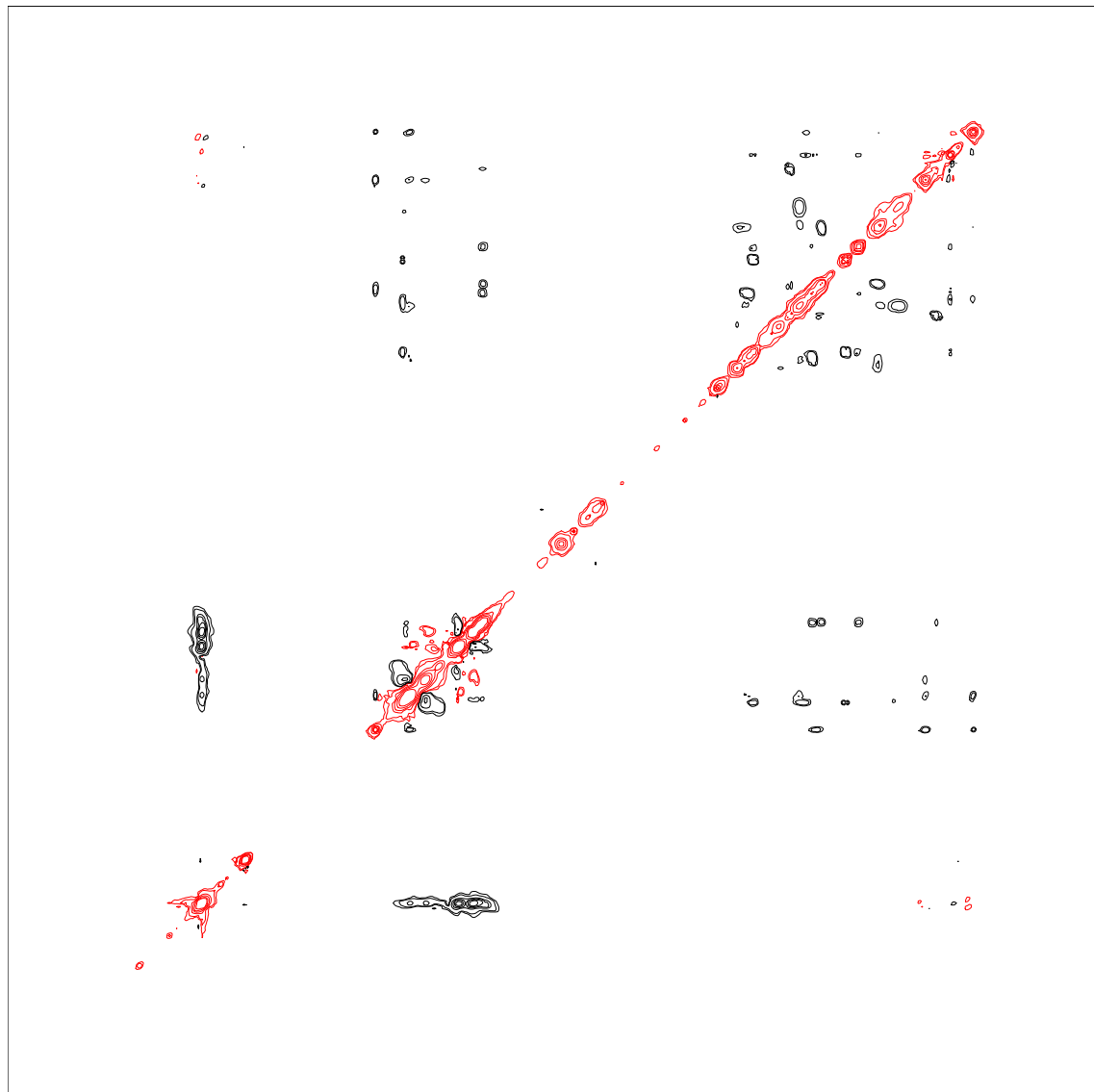
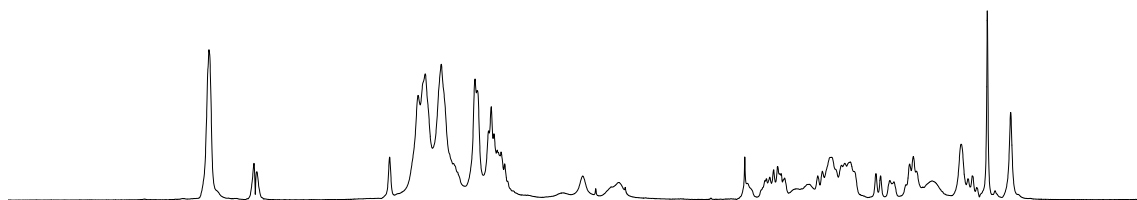
***** CHANNEL f1 *****
 NUC1 1H
 P1 7.20 usec
 P15 400000.00 usec
 PL1 -6.00 dB
 PL9 70.00 dB
 PL11 17.68 dB
 SF01 600.1328159 MHz

F1 - Acquisition parameters
 ND0 1
 TD 256
 SF01 600.1328 MHz
 FIDRES 23.935356 Hz
 SW 10.210 ppm
 FnmODE States-TPPI

F2 - Processing parameters
 SI 1024
 SF 600.1300000 MHz
 WDW QSINE
 SSB 2
 LB 0.00 Hz
 GB 0
 PC 1.00

F1 - Processing parameters
 SI 1024
 MC2 States-TPPI
 SF 600.1300000 MHz
 WDW QSINE
 SSB 2
 LB 0.00 Hz
 GB 0

2D NMR plot parameters
 CX2 15.00 cm
 CX1 15.00 cm
 F2PLO 6.000 ppm
 F2LO 3600.78 Hz
 F2PHI 0.000 ppm
 F2HI 0.00 Hz
 F1PLO 6.000 ppm
 F1LO 3600.78 Hz
 F1PHI 0.000 ppm
 F1HI 0.00 Hz
 F2PPMCM 0.40000 ppm/cm
 F2HZCM 240.05200 Hz/cm
 F1PPMCM 0.40000 ppm/cm
 F1HZCM 240.05200 Hz/cm



ppm

ppm

P-SSENC-DCA

Current Data Parameters
 NAME P-SSENC-DCA-YW
 EXPNO 3
 PROCNO 1

F2 - Acquisition Parameters
 Date_ 20031120
 Time 15.21
 INSTRUM av600
 PROBHD 5 mm QXI 1H ZB
 PULPROG roesyphpr
 TD 2048
 SOLVENT D2O
 NS 8
 DS 16
 SWH 6127.451 Hz
 FIDRES 2.991920 Hz
 AQ 0.1672484 sec
 RG 256
 DW 81.600 usec
 DE 6.00 usec
 TE 293.2 K
 d0 0.00007254 sec
 D1 1.50000000 sec
 d11 0.03000000 sec
 d12 0.00002000 sec
 d13 0.00000400 sec
 INO 0.00016320 sec
 MCREST 0.00000000 sec
 MCWRR 0.00999999 sec
 ST1CNT 128

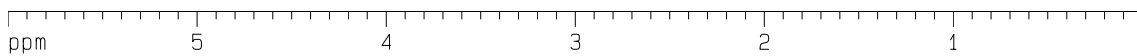
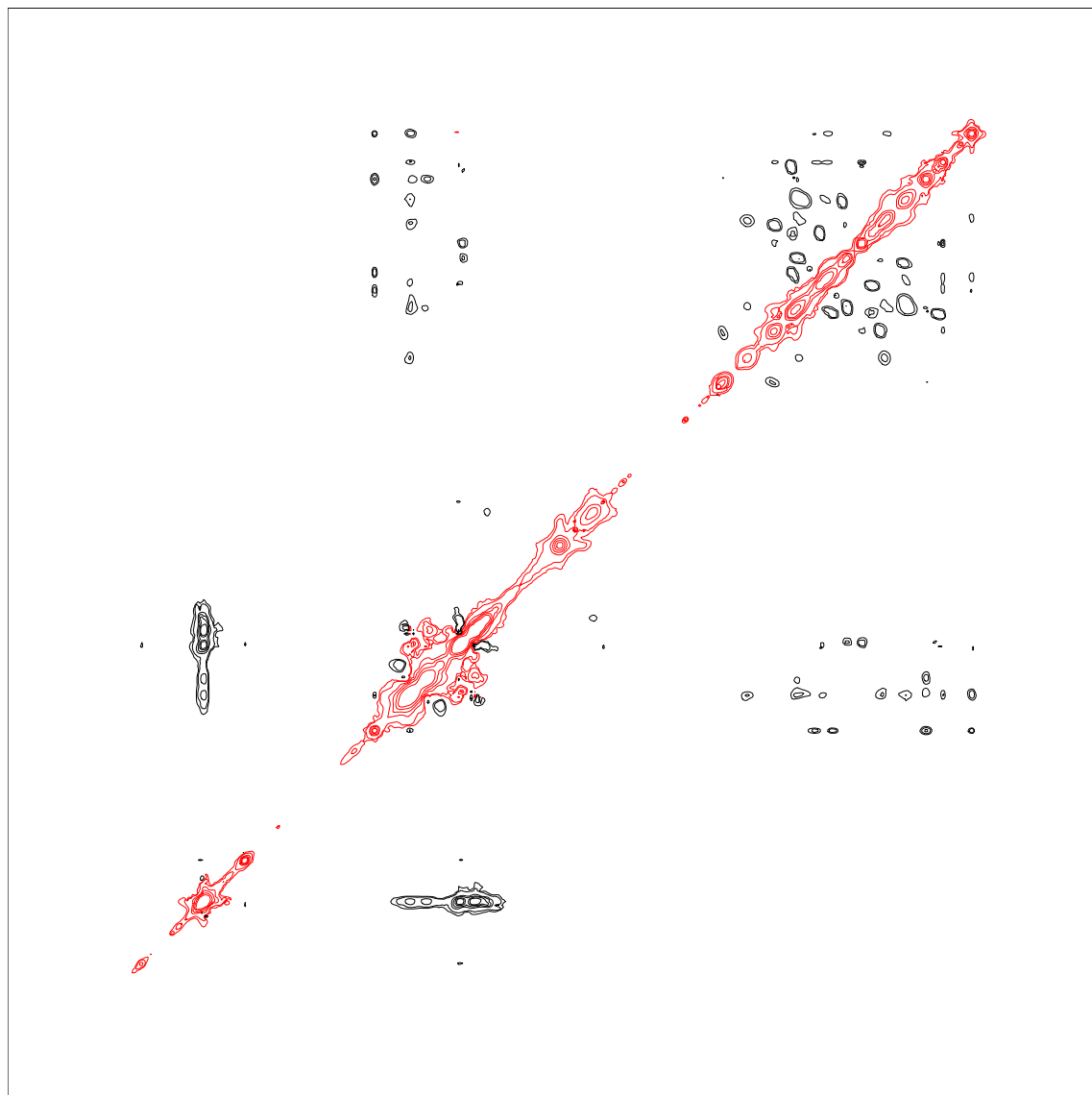
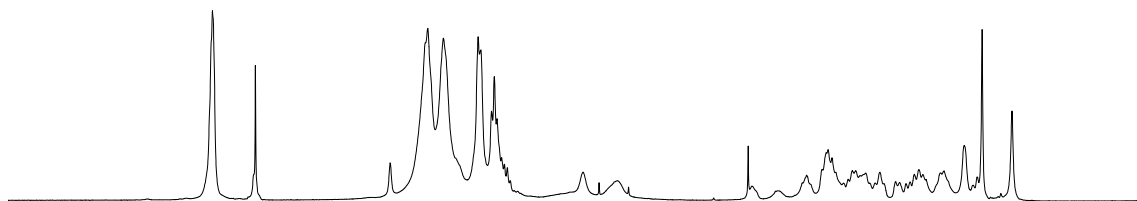
***** CHANNEL f1 *****
 NUC1 1H
 P1 7.95 usec
 P15 200000.00 usec
 PL1 -3.00 dB
 PL9 70.00 dB
 PL11 19.81 dB
 SF01 600.1328160 MHz

F1 - Acquisition parameters
 ND0 1
 TD 256
 SF01 600.1328 MHz
 FIDRES 23.935356 Hz
 SW 10.210 ppm
 FnmODE States-TPPI

F2 - Processing parameters
 SI 1024
 SF 600.1300000 MHz
 WDW QSINE
 SSB 2
 LB 0.00 Hz
 GB 0
 PC 1.00

F1 - Processing parameters
 SI 1024
 MC2 States-TPPI
 SF 600.1300000 MHz
 WDW QSINE
 SSB 2
 LB 0.00 Hz
 GB 0

2D NMR plot parameters
 CX2 15.00 cm
 CX1 15.00 cm
 F2PLO 6.000 ppm
 F2LO 3600.78 Hz
 F2PHI 0.000 ppm
 F2HI 0.00 Hz
 F1PLO 6.000 ppm
 F1LO 3600.78 Hz
 F1PHI 0.000 ppm
 F1HI 0.00 Hz
 F2PPMCM 0.40000 ppm/cm
 F2HZCM 240.05200 Hz/cm
 F1PPMCM 0.40000 ppm/cm
 F1HZCM 240.05200 Hz/cm



ppm

ppm