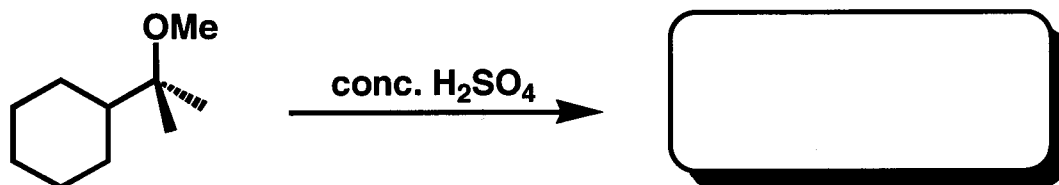


## Handout VIII – Elimination Reactions

1. Fill in the table.

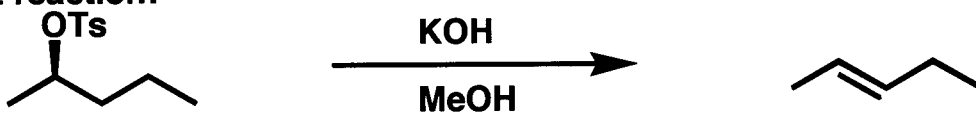
	E1	E2
Number of Steps		
General Mechanism		
Kinetics		
Stereochemistry		
Substrate		
Solvent		
Competing Reactions		

2. Predict the product of the following E1 reaction.

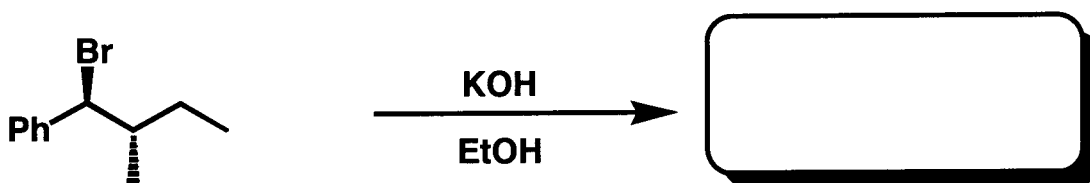


### 3. E2- Newmans or Chairs

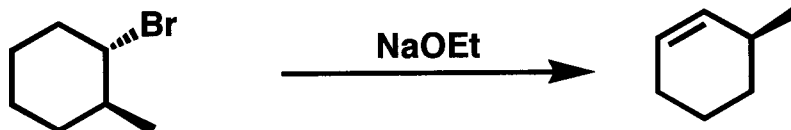
(a) Draw the Newman projection for the conformation required for the E2 reaction:



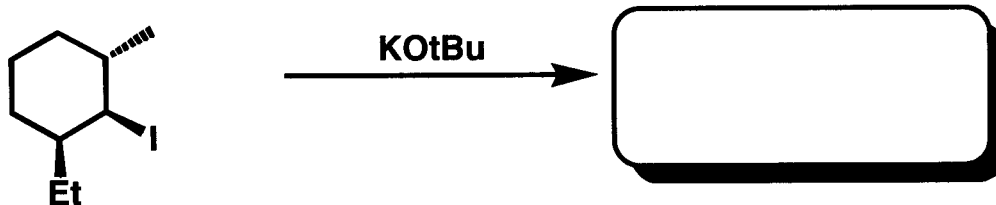
(b) Predict the E2 product:



(c) Draw the chair conformation required for the E2 reaction :

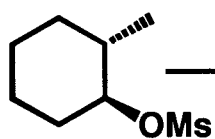


(d) Predict the E2 product:



#### 4. Combined Problems- Substitution and Elimination

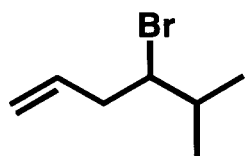
(a)



NaCN

All 2<sup>nd</sup> order products

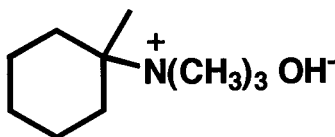
(b)



NaOEt

Major E2 Product

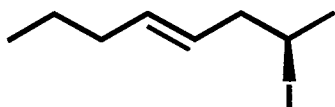
(c)



heat

Major E2 Product

(d)



EtOH

All 1<sup>st</sup> order products