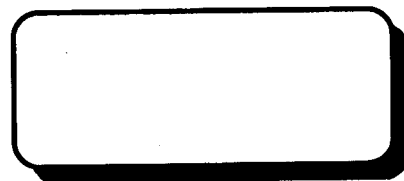
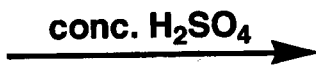
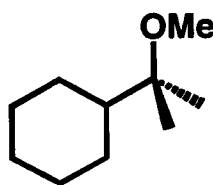


Handout VI – Elimination Reactions

1. Fill in the table.

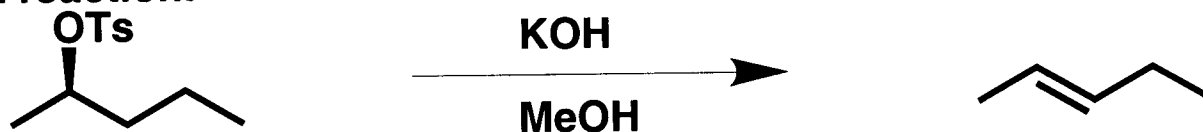
	E1	E2
Number of Steps		
General Mechanism		
Kinetics		
Stereochemistry		
Substrate		
Solvent		
Competing Reactions		

2. Predict the product of the following E1 reaction.

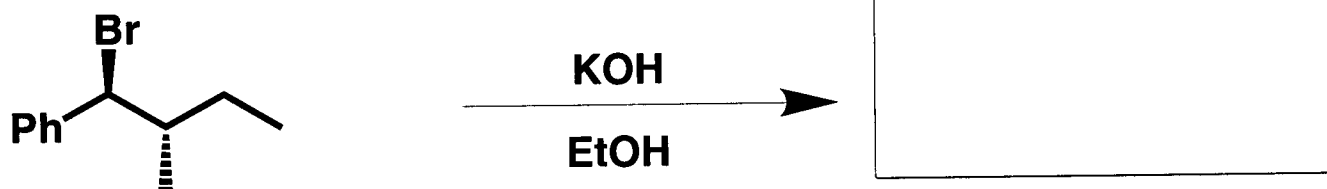


3. E2 Reactions

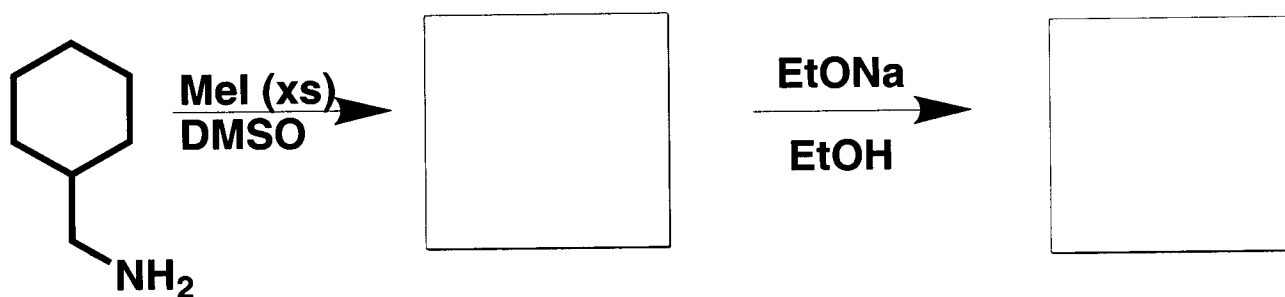
(a) Draw the Newman projection for the conformation required for the E2 reaction:



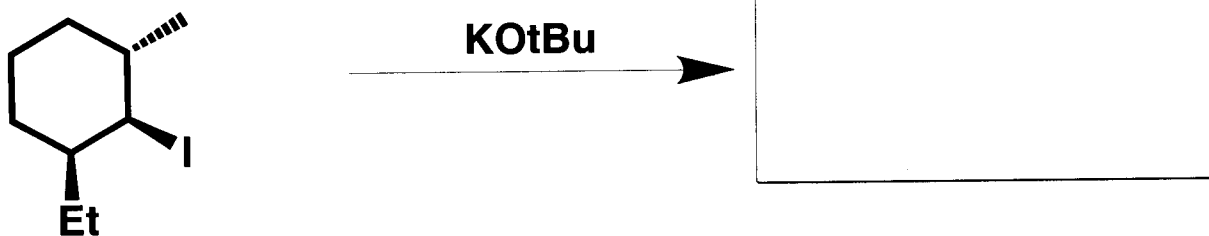
(b) Predict the E2 product:



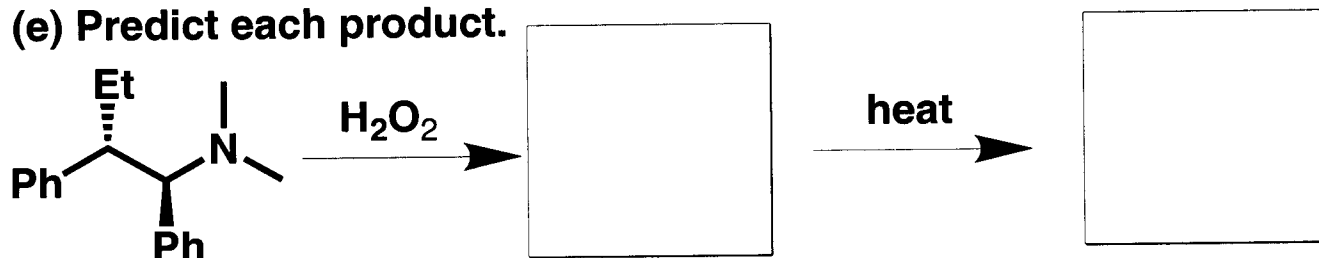
(c) Predict the products of each step.



(d) Predict the E2 product:

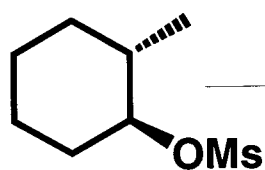


(e) Predict each product.

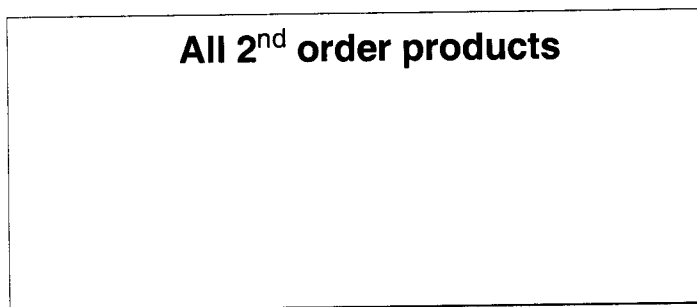


4. Assorted Problems

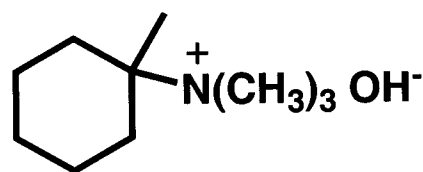
(a)



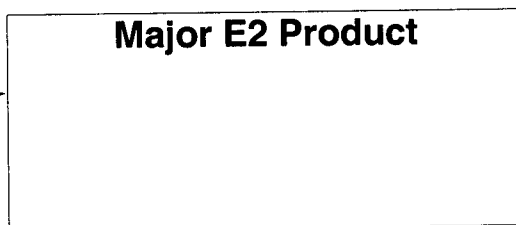
All 2nd order products



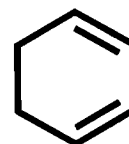
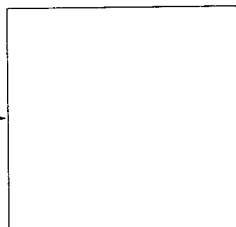
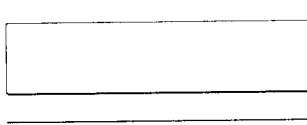
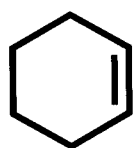
(b)



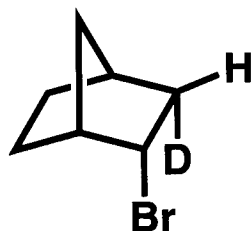
Major E2 Product



(c) Stolen from an old Stu final –



(d)



NaOH

H₂O

